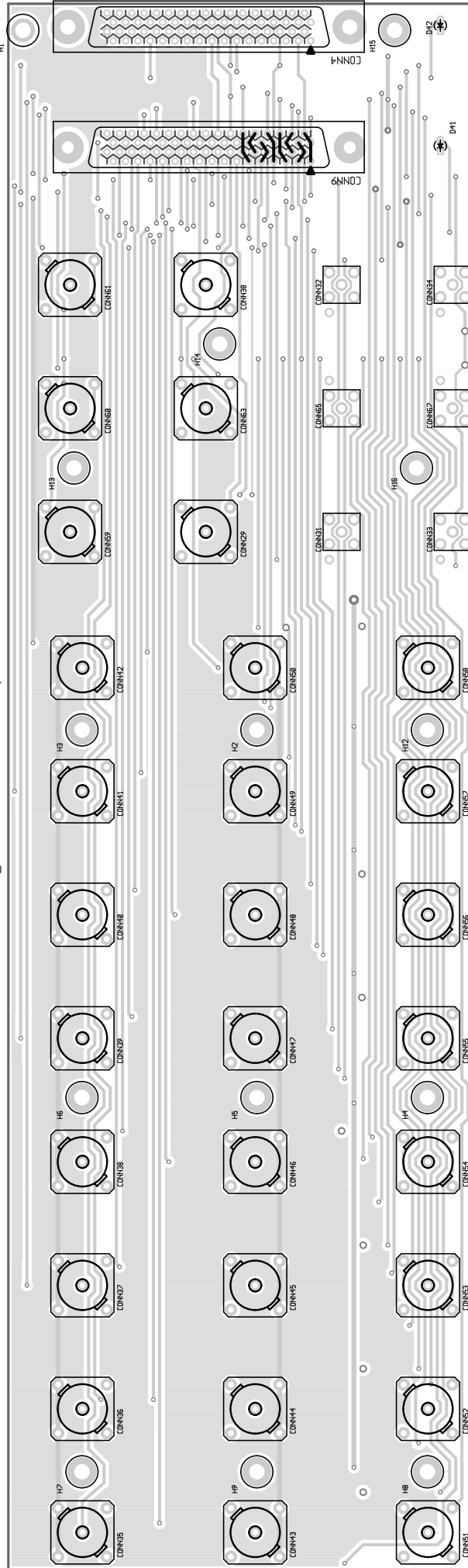


NI-Verteiler3, analog I/O und digital

Abmessungen der Leiterplatte: 322 mm x 96 mm

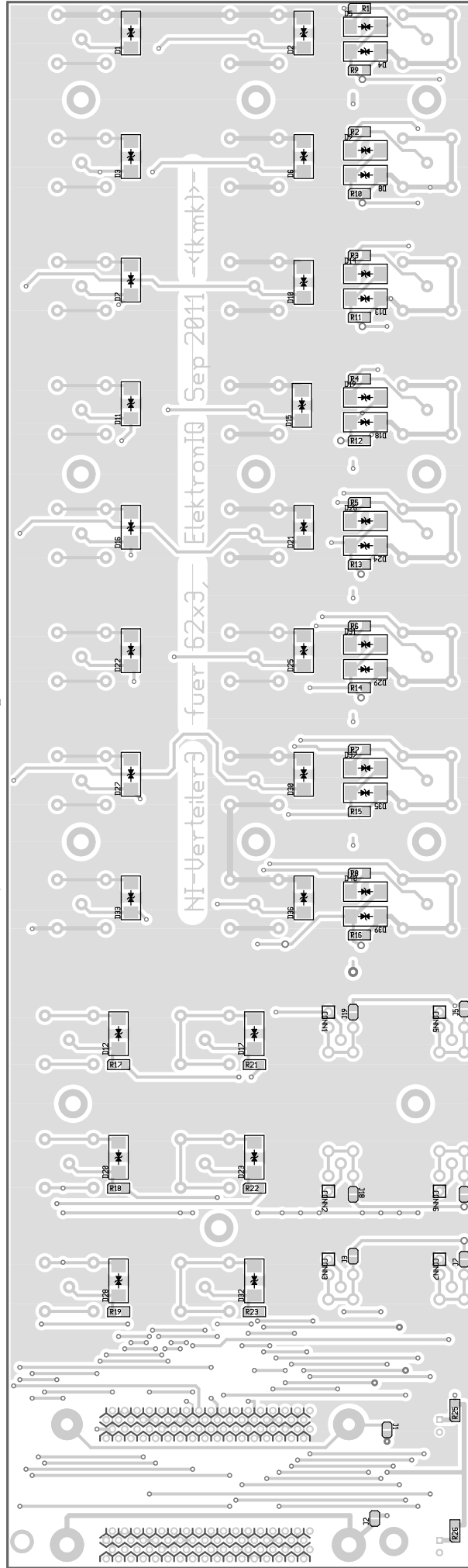
(grid is 25 mil)



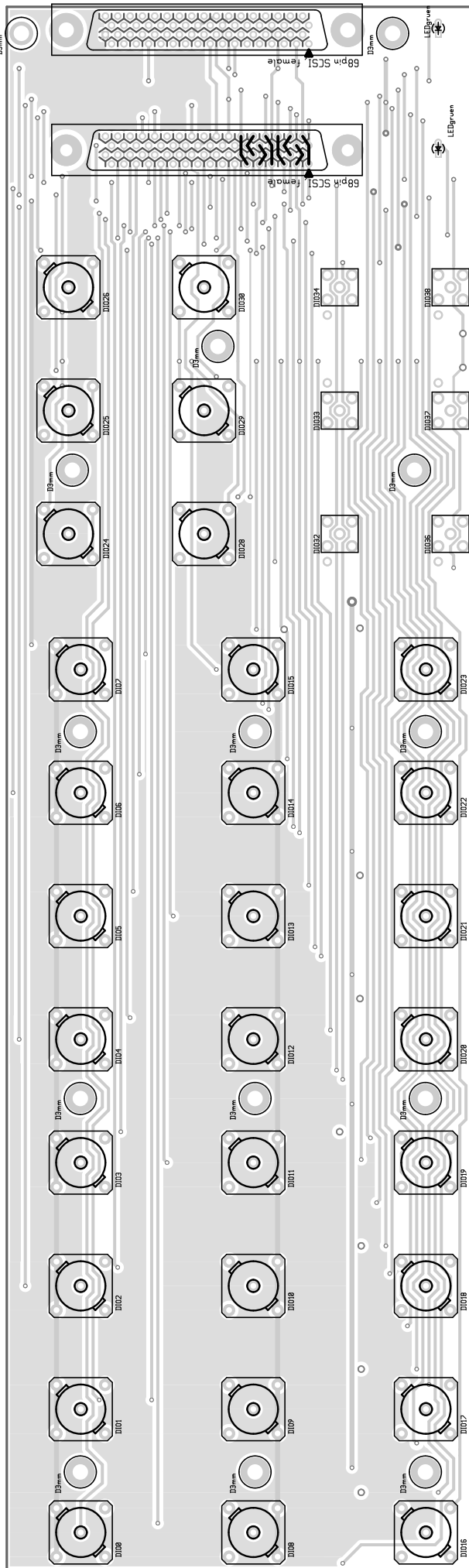
(lim 2S ei birp)

mm 2R x mm 2SE :aitlqarstisJ reb nspuææmrdA

latigib brn 0I polara, ErlistetrvU-INI



NI-Verteiler3, analog IO und digital      Abmessungen der Leiterplatte: 322 mm x 96 mm      (grid is 25 mil)



(lim 2S ei birp)

mm 2R x mm 2SE :aitlqarfiel rab nspuzesmdA

latigib brn 0I polomA ,ErelieTrU-1N

